

# TAILORED AIR BATH

TK-300US

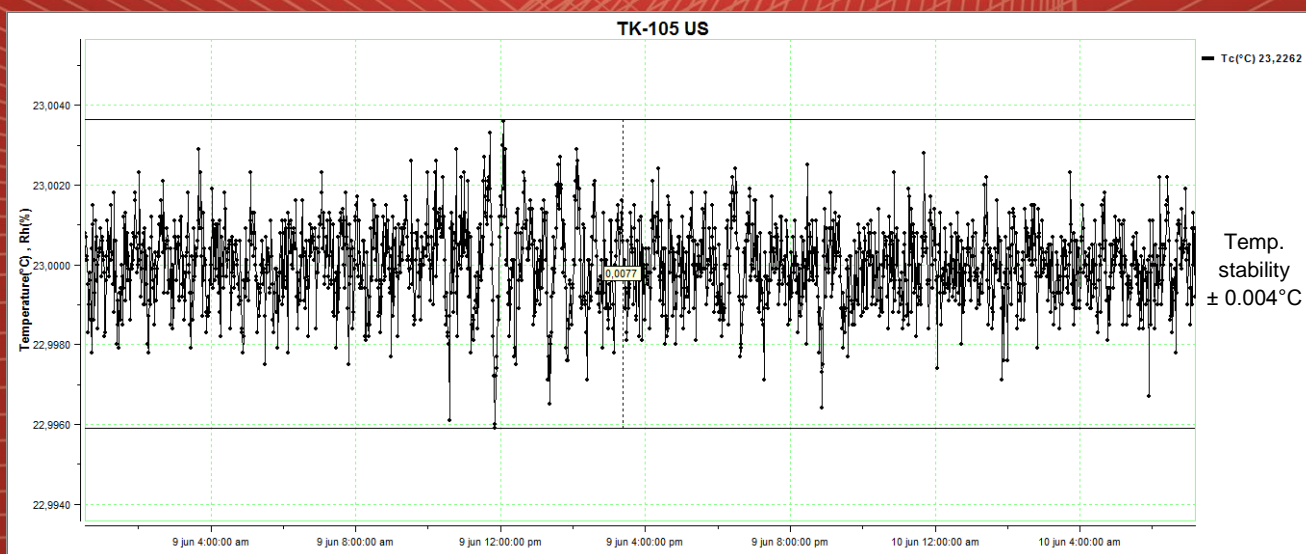
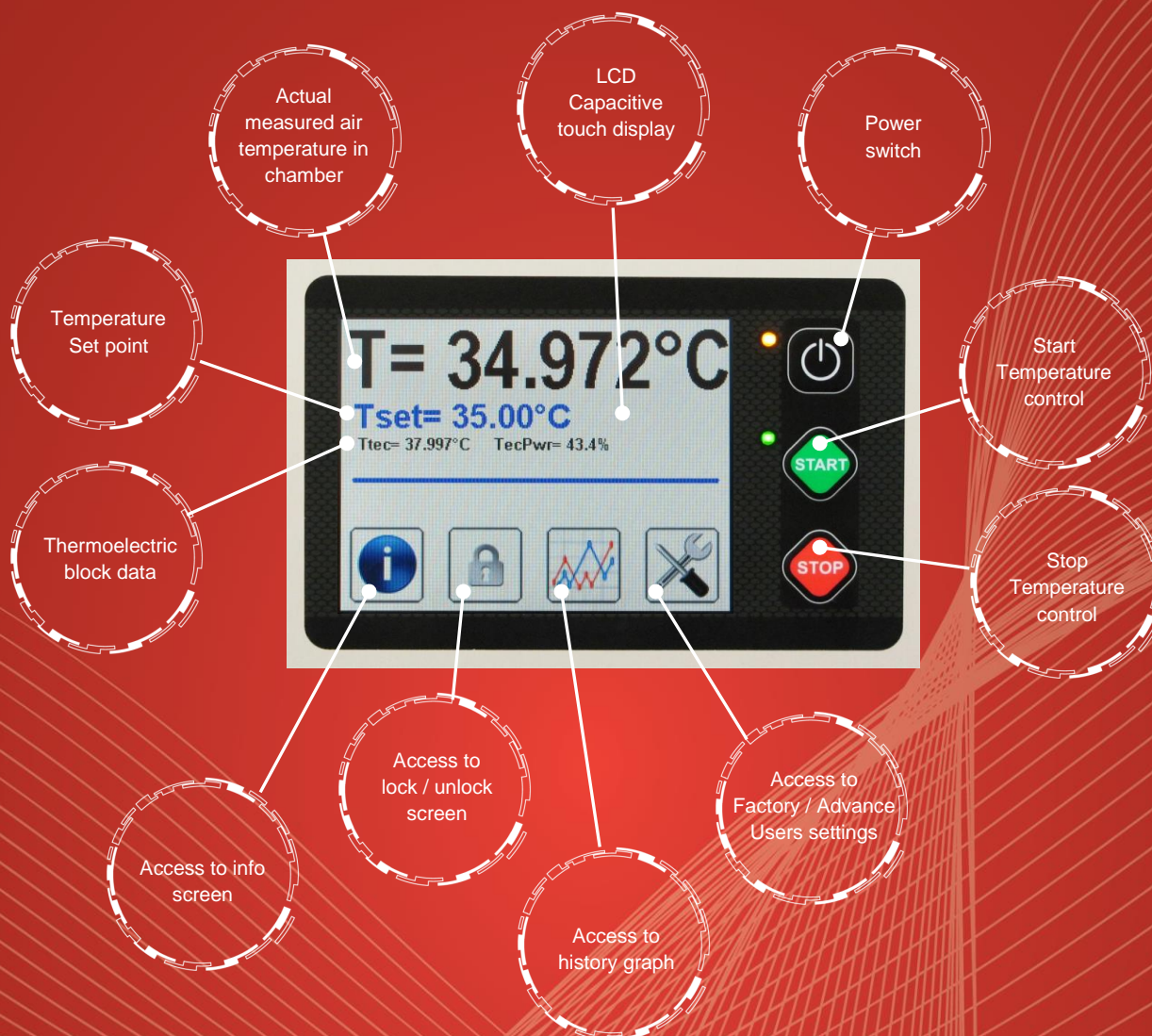
Refined solution for ultra stable temperature environment 24/7, 365:

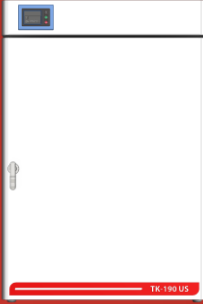
- dry, clean, stable, silent, storage for standard resistors
  - perfect for checking temperature coefficients
- Convenient Front Access – Side Access for Cables & Probes
  - Keeping the temperature within 10mK over days
    - Peltier driven technology
    - Cascade PID control





## Controller functions:



	<b>TK-300US</b>
	
External dimensions (WxHxD) in mm	905 x 1490 x 790
Internal dimensions (WxHxD) in mm	600 x 1000 x 500
Volume (L)	300
Temperature range (°C)	+ 18 ... + 35
Temperature display resolution (°C)	0.001
Temperature set resolution (°C)	0.1
Temperature stability (°C)	0.005 @ 23 °C
Temperature uniformity (°C)	± 0.05 @ 23 °C
Heating rate (+18°C to +35°C)	~ 80 min
Cooling rate (+35°C to +18°C)	~ 160 min
Temperature Control	Cascade PID
Power supply	230 V 50/60 HZ (± 10%)
Wattage (W)	250
Interface	RS 232 or USB or Ethernet
Shelve	3
Access port	2 x opening 55 x 20 mm
Weight (kg)	~ 200

### Ordering information and accessories:

Description	Part no.
Ultra stable temp. chamber TK-300US	Tailored
Hinged and sealed full glass door with sealed gloves	Tailored
USB interface	1466
Ethernet interface	1716
Shelve	1725
Access port 55 x 20 mm	1732
Password protection	1718
Evaluation report	1719
Monitoring and data collection software	104